



SEMBAWANG PRIMARY SCHOOL
The Best From Me

2024 Breakfast with Principal Primary 5



Agenda

- 1 Introduction and SBPS Strategic Direction
- 2 PSLE Scoring and S1 Posting
- 3 Direct Schools Admission-Secondary (DSA-Sec)
- 4 Student Development Experiences in P5
- 5 Support for the Upper Primary Students
- 6 Cultivating Healthy Screen Use





School Personnel

Name	Designation
Mr Ng Aik Boon	Principal
Mr Zafilin A Hamid	Vice-Principal
Mr Shawn Tan	Vice-Principal (Admin)
Mr Yang Binglin	Year Head/Upper Primary
Mdm Norlin Mansor	Asst. Year Head/Upper Primary



School Personnel

Name	Designation
Mdm Noraida Wagimin	HOD/English Language
Mrs Rena Phang	HOD/Mathematics
Mr Ng Wei Da	HOD/Science
Mr Xie Menghui	HOD/Mother Tongue Languages
Ms Tiffany Chong	HOD/Character and Citizenship Education
Mr Calvin Chia	HOD/Student Management
Mr Oh Ming Yie	HOD/ICT
Mr Mohd Iskandar	SH/PE & CCA
Mr Tan Zuo Hou	School Staff Developer
Ms Agnes Lim	Administration Manager
Mr Md Yusry	Operations Manager

Why We Do What We Do

School Philosophy

We believe in providing a holistic education to help every child discover the joy of learning in a safe and caring environment.

School Vision

Innovative Learners, Rooted in Values

School Mission

Nurturing Innovators in a Vibrant Community

School Values

Relational Values: Care, Gratitude & Integrity

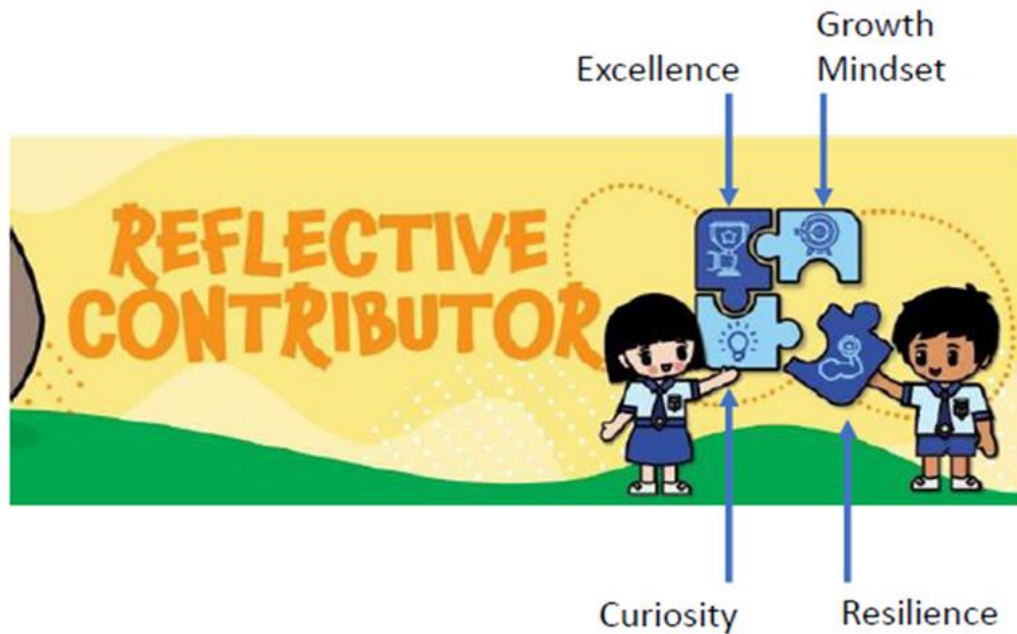
Functional Values: Curiosity, Excellence and Resilience



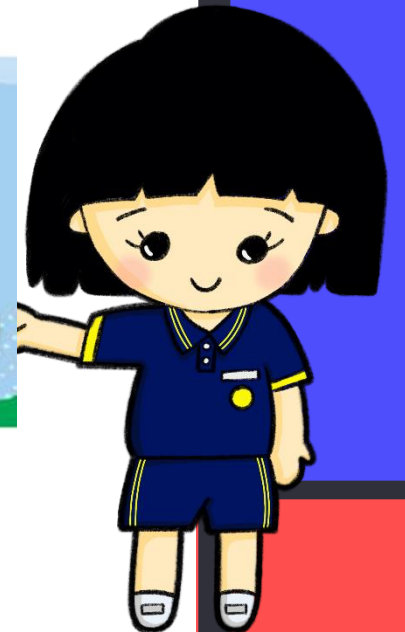


Student Outcomes

Reflective Contributor has a **growth mindset** towards learning and displays the values of **curiosity**, **excellence** and **resilience**.



Compassionate Leader is able to **lead self and others** by contributing to the community and displaying the values of **care**, **gratitude** and **integrity**.





Student Outcomes

Student Outcomes	Value	No	Statements
Compassionate Leader	Care	1	I extend a helping hand to those in need.
		2	I encourage others.
	Gratitude	3	I am able to express my appreciation to others in different forms.
		4	I know why I have to show appreciation.
	Integrity	5	I can be entrusted to complete a given task.
		6	I practise fair play.
Reflective Learner	Curiosity	7	I ask questions to enhance my learning.
		8	I am able to explain my decisions.
	Excellence	9	I take actions to correct my mistakes.
		10	I work on my areas for growth.
	Resilience	11	I seek help to solve my problems.
		12	I keep trying when faced with challenges.



School Strategic Plan 2022-2024

Strategic Thrust 1 Student Excellence	Strategic Thrust 2 Growth Mindset	Strategic Thrust 3 Collaborative Culture
<p><u>Strategic Goal 1.1</u> To develop the holistic child.</p> <p><u>Approach</u></p> <ul style="list-style-type: none">• Designing learning experiences that support active learning.• Designing learning experiences that develop student agency.	<p><u>Strategic Goal 2.1</u> To cultivate Growth Mindset in students and staff.</p> <p><u>Approach</u></p> <ul style="list-style-type: none">• Fostering positive thinking.• Catalysing innovation.• Enhancing professional development.• Promoting staff well-being and engagement.	<p><u>Strategic Goal 3.1</u> To nurture a collaborative culture among students and staff.</p> <p><u>Approach</u></p> <ul style="list-style-type: none">• Building quality relationships and trust.• Providing opportunities to encourage collaboration among students.• Advocating collaboration across staff segments.• Building strong partnership with stakeholders and community partners.



Growth Mindset

Stanford University psychologist Carol Dweck's concept of the ***Growth Mindset*** is a simple idea:

- people believe that their most basic abilities can be developed through dedication and hard work—brains and talent are just the starting point
- this view creates a love of learning and a resilience that is essential for success in life



Growth Mindset
Intelligence can be developed

Leads to a desire to learn
and therefore a tendency to ...

If you hold a Growth Mindset, you believe that intelligence can be developed, that the brain can be grown and strengthened, like a muscle that can be trained. This leads to your desire to improve.





Growth Mindset

Characteristics:

Believes that intelligence can be developed. This leads to a strong desire to learn and therefore a tendency to:

- embrace challenges
- persist in the face of setbacks
- see effort as a pathway to mastery
- learn from criticism
- find lessons and inspiration in the success of others



Growth Mindset

Intelligence can be developed

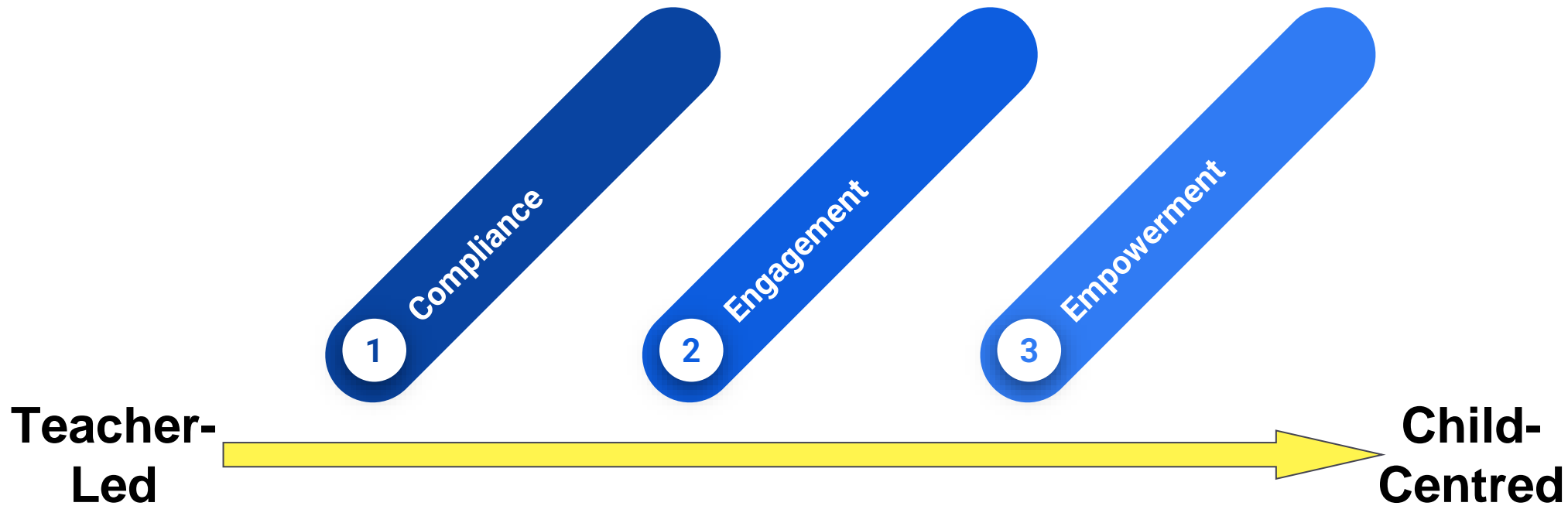
Leads to a desire to learn
and therefore a tendency to ...

If you hold a Growth Mindset, you believe that intelligence can be developed, that the brain can be grown and strengthened, like a muscle that can be trained. This leads to your desire to improve.





Strategic Focus (2022-2024)



Student Agency





*Student agency is
the capacity to set a
goal, reflect and act
responsibly.*





Strategies to develop Student Agency

- Provide opportunities for Students' ***Voice, Choice & Advocacy***
 - E.g. Young Journalist Programme, Be the Change, Head Prefect Election, Good Morning, Sembawang Radio Show, Project Work, Celebration of the Arts COTA (12 May)
- Develop ***Student Leadership***
 - E.g. Prefects, Class leadership, SBPS PAL, Buddy system
- Focus on ***Process of Learning***
 - E.g. Gradual Release of Responsibility, Voice & Choice, Feedback to Feedforward, Blended Learning, ICT-enabled learning



SHAPING THE FUTURE OF LEARNING

SCHOOLS
WORK PLAN
SEMINAR
2023



MOE prepares students for fast-changing world through tech, updating learning spaces

Initiatives announced in 2023

1 Every Student a Creator, Connector and Contributor

- Enhanced 21CC Framework and Priority Emerging 21CC (E21CC)

2 EdTech as a Capability Multiplier

- "Transforming Education through Technology" Masterplan 2030
- Strengthening Student Cyber Wellness

Enablers

Schools can decide when to implement and which enablers to tap on.



From the School as our World, to the World as our School



- School White Area and Canteen Grant
- Additional funding for flexible furniture
- Establishment of Partnerships Engagement Office



Staff Capacity & Capabilities

- Teacher Growth Model (2024)

PSLE Scoring and S1 Posting





How does the PSLE scoring work?

Scoring for Standard Level Subjects

- Reduces fine differentiation of students
- Reflects a student's individual level of achievement

AL	Reference Raw Mark Range
1	≥ 90
2	85 – 89
3	80 – 84
4	75 – 79
5	65 – 74
6	45 – 64
7	20 – 44
8	< 20





How does the PSLE scoring work?

Scoring for Foundation Level Subjects

Foundation subject grades will be graded in 3 scoring bands from AL A to C.

Foundation Level AL Reflected on Result Slip	Foundation Raw Mark Range
A	75 – 100
B	30 – 74
C	< 30

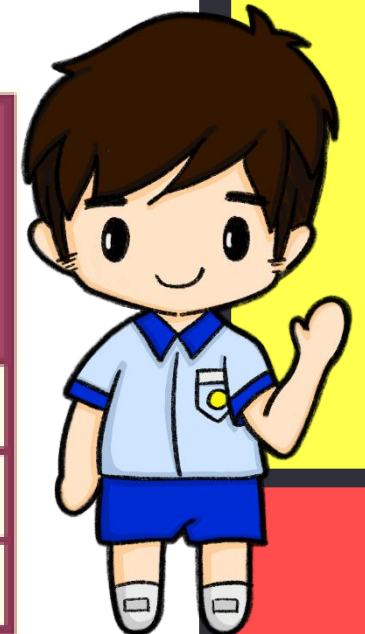




Foundation Level Subject Grades

- For the purpose of S1 posting, Foundation Level AL A to AL C will be mapped to AL 6 to AL 8 of Standard level subjects respectively to derive a student's overall PSLE Score.
- The mapping is based on the learning and assessment load of the subjects.

Foundation Level AL Reflected on Result Slip	Foundation Raw Mark Range	Equivalent Standard Subject AL	Standard Raw Mark Range
A	75 – 100	6	45-64
B	30 – 74	7	20-44
C	< 30	8	<20





How does the PSLE scoring work?

Overview

4 Subject ALs will be added to form the PSLE Score

- The PSLE Score ranges from 4 to 32, with 4 being the least.
- Students will be admitted to secondary schools through 3 Posting Groups.

ENGLISH AL3
MOTHER TONGUE AL2
MATHEMATICS AL1
SCIENCE AL2

PSLE SCORE: 8

PSLE Score	Posting Group	Subject level for most subjects
4-20	3	G3
21 and 22	2 or 3	G2 or G3
23 and 24	2	G2
25	1 or 2	G1 or G2
26 - 30 (with AL 7 in EL and MA)	1	G1





S1 Posting

- PSLE Score remains the first criterion for secondary school posting.
- If two students with the same PSLE Score vie for a place in a school, the following tie-breakers will be used:
 1. Citizenship
 2. Choice order of schools
 3. Computerised balloting



Direct Schools Admission-Secondary (DSA-Sec)



Entering a Secondary School



PSLE/S1 Posting Process

- Based on a student's PSLE score
- Most students enter secondary schools this way



DSA-Sec

- Based on a diverse range of talents and achievements in specific academic subjects or non-academic areas, beyond what the PSLE recognises
- Allows students to access school programmes to develop their talents



Aim of DSA-Sec

DSA-Sec aims to:

promote a holistic education by allowing students to seek admission to a secondary school on the basis of talents and achievements that may not be demonstrated at the Primary School Leaving Examination (PSLE).





Talent Areas

- Sports and games
- Visual, literacy and performing arts
- Debate and public speaking
- Science, mathematics and engineering
- Languages and humanities
- Uniformed groups
- Leadership (for example, prefects)





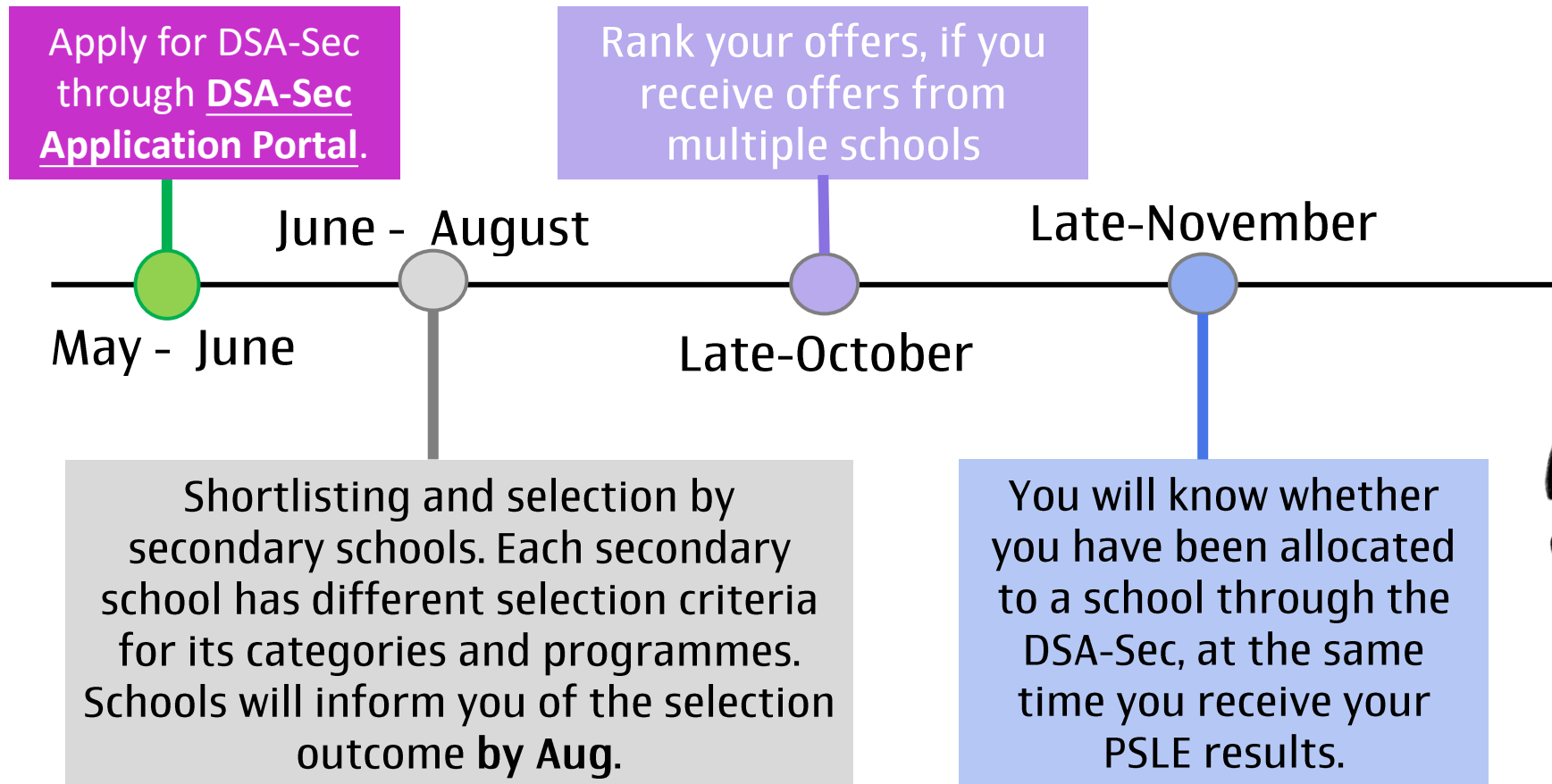
Information on DSA-Sec

- Usually conducted between May and November
- Participating schools have different areas of focus (academics or non-academics), selection criteria and selection processes
- Participating secondary schools may select P6 students for admission to Secondary 1 prior to the release of PSLE results
- Students who have opted for a school under DSA-Sec must still achieve the PSLE result that will enable them to be eligible for admission to a course offered by the selected DSA-Sec school





What is the Timeline for DSA-Sec?





Important Notes on DSA-Sec

- Students who are not involved, or not successful, in the DSA selection exercise will participate in the Secondary 1 Posting Exercise after the release of PSLE results
- Students admitted to a secondary school through DSA-Sec will not be allowed to
 - Participate in the S1 Posting Exercise (as places have been reserved for them in the DSA-Sec school)
 - Transfer to another school after the release of the PSLE results (as they are expected to honour their commitment to the DSA-Sec school)
- More details on DSA is available on MOE website:
<https://www.moe.gov.sg/secondary/dsa>



School Finder

https://www.moe.gov.sg/schoolfinder

A Singapore Government Agency Website [How to identify](#) ▾

SchoolFinder

CourseFinder

Academic calendar

Quick links

♥ My shortlisted (0)



Ministry of Education
SINGAPORE

Education levels ▾

Financial matters ▾

Education in SG ▾

Newsroom ▾

Careers

About MOE



[MOE](#) > [SCHOOLFINDER](#) >

Last Updated: 11 January 2024

[How to use SchoolFinder](#)

SchoolFinder

Explore schools based on their distance from your home, locations, CCAs, subjects and programmes offered.



Secondary ▾ Search for a school or keywords e.g. "Admiralty" or "football"

Criteria

[Clear all](#)

Location



Search for schools near you

[Clear](#)

OR

Search for schools by area



Secondary schools

← 1 of 6 →

Showing 112 Secondary schools

Admiralty Secondary School

📍 Woodlands

31 Woodlands Crescent, S737916



Ahmad Ibrahim Secondary School

📍 Yishun



[Help us improve](#)

Student Development Experiences in P5





P5 Student Development Experiences

- P5 Cohort Camp (24-26 Jan)
- Interdisciplinary Learning Journeys (Throughout the Year)
- Experiential Week - Interdisciplinary Project Work, Code for Fun, etc. (4-8 Mar)
- National Education Show (Jul)
- Growing Years Series (Throughout the Year)
- Games Day (3 Oct)
- Overseas Learning Journey - for selected students (13-17 May)





P5 Student Development Experiences

- Banded Lessons for Mathematics and Mother Tongue Languages
- Remediation Lessons – for selected students
- Reading Circles – for selected students
- E2K (Math and Science) – for selected students





Overseas Learning Journey

- 13 May (Mon) to 17 May (Fri)
- Kuala Lumpur
- 34 students
- Selection Criteria
 - ✓ Excellent Conduct
 - ✓ Shortlisting of students
 - ✓ Interviews



Support for Upper Primary Students





Support for P5 Students

- Target Setting
- School-Based Growth Mindset Curriculum
- Education & Career Guidance (ECG)
- Year Head's Time
- Form Teachers' Guidance Period (FTGP)



Cultivating Healthy Screen Use

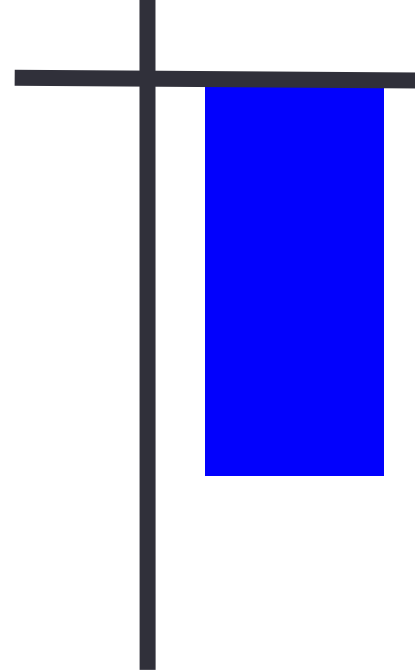




M  **anage**
Your Child's Screen Use

M  **odel**
Healthy Media Habits

M Encourage  **eaningful**
Screen Use





Manage Your Child's Screen Use

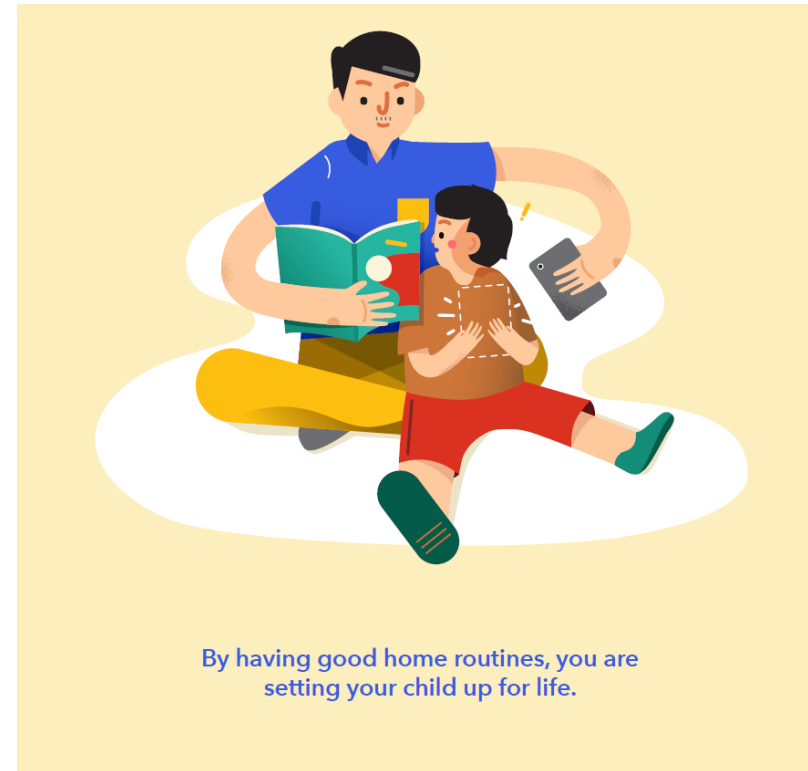
- Set boundaries of screen use as a family, considering the needs of your child
- Have a plan that balances screen use with other activities





Model Healthy Media Habits

- Review your own healthy habits
- Have “screen-free” times





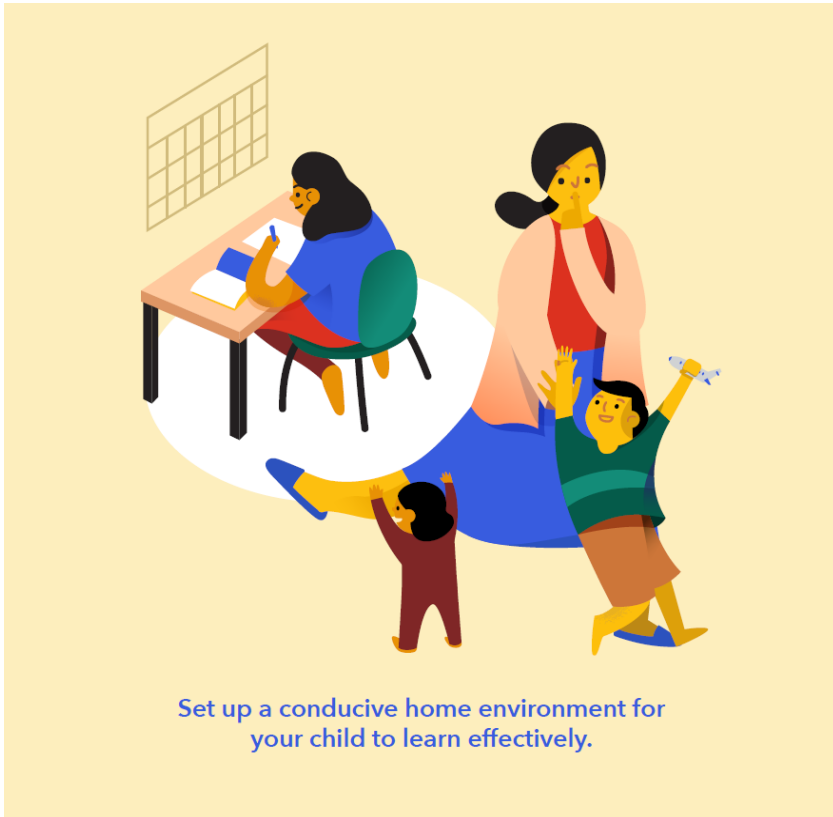
Encourage Meaningful Screen Use

- Discuss with your child about what he/she is viewing
- Prioritise active screen use that engages your child over passive screen use that does not require him/her to think or interact





Other Useful Tips



- Discuss with your child and create a timetable that strikes a healthy balance between screen use and other activities
- Discuss with your child about harmful influences of online activities





Questions?

If you have any queries, please send an email to:
yang_binglin@schools.gov.sg.





THANK YOU



@sembawangprimaryschool

